

Metastatic castration-resistant prostate cancer (mCRPC) treated with ²²⁵Ac-PSMA-617. Case report

Câncer de próstata metastático resistente à castração (mCRPC) tratado com ²²⁵Ac-PSMA-617. Relato de caso

Rodrigo Bovolin de Medeiros¹, Marcus Vinicius Grigolon², Tatianny Paula Araújo¹, Miguel Srougi³

ABSTRACT

Metastatic castration-resistant prostate cancer (mCRPC) is an extremely severe disease that relentlessly evolves to death. Over the past few years, we have seen significant improvements in the different types of treatments available, which have positively impacted several clinical outcomes, including higher survival rates and better quality of life. Since Radium-223 approval by FDA in 2013, nuclear medicine has been incorporated to the therapeutic arsenal. Progress in this field have motivated a pursuit for new targeted therapies using radioactive isotopes. Recent reports addressing the first cases treated with this technique are impressive due to the high response rates obtained in refractory patients. Here we report the case of a patient with mCRPC who had been previously treated with several lines of anti-androgen therapy and cytotoxic chemotherapy, recently treated with PSMA labeled with the alpha-emitting radioisotope Actinium-225 (²²⁵Ac).

Keywords: Prostatic Neoplasms; Castration-Resistant; Nuclear Medicine; Alpha Particles

1. Hospital Sírio-Libanês, Centro de Oncologia - Brasília - DF - Brazil
2. Hospital Sírio-Libanês, Departamento de Medicina Nuclear - Brasília - DF - Brazil
3. Universidade de São Paulo, Disciplina de Urologia - São Paulo - SP - Brazil

Financial support: none to declare.

Conflicts of interest: The authors declare no conflict of interest relevant to this manuscript.

Corresponding author: Rodrigo Bovolin de Medeiros. Hospital Sírio-Libanês. Rua Dona Adma Jafet, 115 - Bela Vista, São Paulo - SP. 01308-050. rodrigo.medeiros@hsl.org.br

Received on: August 5, 2018 | **Accepted on:** March 18, 2019

DOI: 10.5935/2526-8732.20190002

RESUMO

O câncer de próstata metastático resistente à castração (mCRPC) é uma doença extremamente grave que evolui implacavelmente para a morte. Nos últimos anos, temos visto melhorias significativas nos diferentes tipos de tratamentos disponíveis, que têm um impacto positivo sobre vários desfechos clínicos, incluindo taxas mais elevadas de sobrevida e melhor qualidade de vida. Desde a aprovação do Radium-223 pela FDA em 2013, a medicina nuclear foi incorporada ao arsenal terapêutico. O progresso nesse campo motivou a busca por novas terapias direcionadas usando isótopos radioativos. Os relatos recentes que abordam os primeiros casos tratados com esta técnica são impressionantes, devido às altas taxas de resposta obtidas em pacientes refratários. Aqui apresentamos o caso de um paciente com mCRPC que tinha sido previamente tratado com várias linhas de terapias antiandrogênicas e quimioterapia citotóxica e recentemente tratado com o alfa radioisótopo Actínio-225 (²²⁵Ac) marcado com PSMA.

Descritores: Neoplasias da Próstata; Resistentes à Castração; Medicina nuclear; Partícula alfa

INTRODUCTION

Prostate cancer is the second most frequent malignancy diagnosed in adult men in the world, with an incidence of 1,600,000 new cases and 26,700 deaths every year.⁽¹⁾ In Brazil, its occurrence is also the second highest, only behind of non-melanoma skin cancer. The Brazilian National Cancer Institute (INCA) estimates 68,220 new cases in 2018.⁽²⁾

The disease has several clinical scenarios, and the most advanced stage corresponds to the metastatic castration-resistant prostate cancer (mCRPC).

More recently, nuclear medicine has been playing an essential role in prostate cancer care. Some

examples include the PET CT Scan with Ga68-PSMA as an accurate staging method and the efficacy of Radium-223 in controlling pain and improving overall survival of patients with bone metastases.^(3,4)

Alpha-emitting radioisotopes have high linear energy transfer (LET). Actinium-225 (²²⁵Ac) is an alpha emitter that can be labeled to the prostate-specific membrane antigen (PSMA) and used for treating patients with metastatic prostate cancer.⁽⁵⁾ This strategy has huge therapeutic potential.

Here we report the case of the first Brazilian patient who had received treatment with ²²⁵Ac-PSMA-617 at the Heidelberg University, Germany.

METHODS

A case report of an individual patient with metastatic castration-resistant prostate cancer (mCRPC) by means of medical records review.

RESULTS

ASC., male, 63 years old, was diagnosed with a locally advanced prostate cancer, which was surgically removed in July 2007. It was a Gleason 10 acinar adenocarcinoma stage pT3b pN1.⁽⁶⁾ The tumor was present on both lobes and affected approximately 30% of glandular volume. It extended to seminal vesicles and periprostatic fat and spread to iliac lymph nodes. The initial PSA was 10 ng/mL. After surgery, patient initiated androgen deprivation therapy with the LHRH analog Goserelin and remained in biochemical remission for forty-eight months approximately.

As of the last quarter of 2011, the patient started showing progressive PSA elevations despite presenting a castration level of testosterone. The antiandrogen drug Bicalutamide was started and then, after its failure, diethylstilbestrol was combined to the LHRH analog. These strategies were maintained for approximately eighteen months.

In 2013, the patient had radiological progression and received external beam radiotherapy at a dose of 55 Gy to prostate bed and obstructing lesion across the left ureterovesical junction.

Successive progressions were seen over the months that followed and palliative care included several lines of treatment (Table 1).

In December 2015, a PET CT Scan with Ga68-PSMA showed the most critical point of the patient's disease (Figure 1). Bones and abdominal lymph nodes had been extensively affected, and direct infiltration of the rectum, anal sphincter and penile urethra was present. In the majority, target lesions demonstrated extremely high tracer uptake.

In September 2016, chemotherapy with cabazitaxel was discontinued in the face of a high risk of potentially severe clinical complications associated with chemotherapy myelotoxicity. At that time, the serum PSA level was 242.61 ng/mL.

Despite extensive local and systemic disease, the patient was in reasonable medical condition, with an ECOG performance status of 1.⁽⁷⁾

More recently, we became aware of articles from Heidelberg University reporting impressive responses to ²²⁵Ac-PSMA therapy.⁽⁸⁻¹⁰⁾ With the patient's consent, we decided to submit him to an appointment at the German university.

On September 30th, 2016, the patient underwent first cycle of intravenous ²²⁵Ac-PSMA-617 at a dose of 8 MBq. He was admitted to the inpatient unit of the University Hospital for 48 hours for cooling of larger salivary glands with thermal compresses. This procedure is intended to reduce xerostomia, which is expected with treatment, as these glands have a high physiological uptake of PSMA.⁽¹⁰⁾ Despite this procedure, xerostomia is expected in virtually all patients⁽⁵⁾ and it is frequently a lasting inconvenient side effect. Xerophthalmia also occurs for the same reason.⁽¹¹⁾ The patient had excellent immediate tolerance to treatment, and no immediate unpleasant effect was reported.

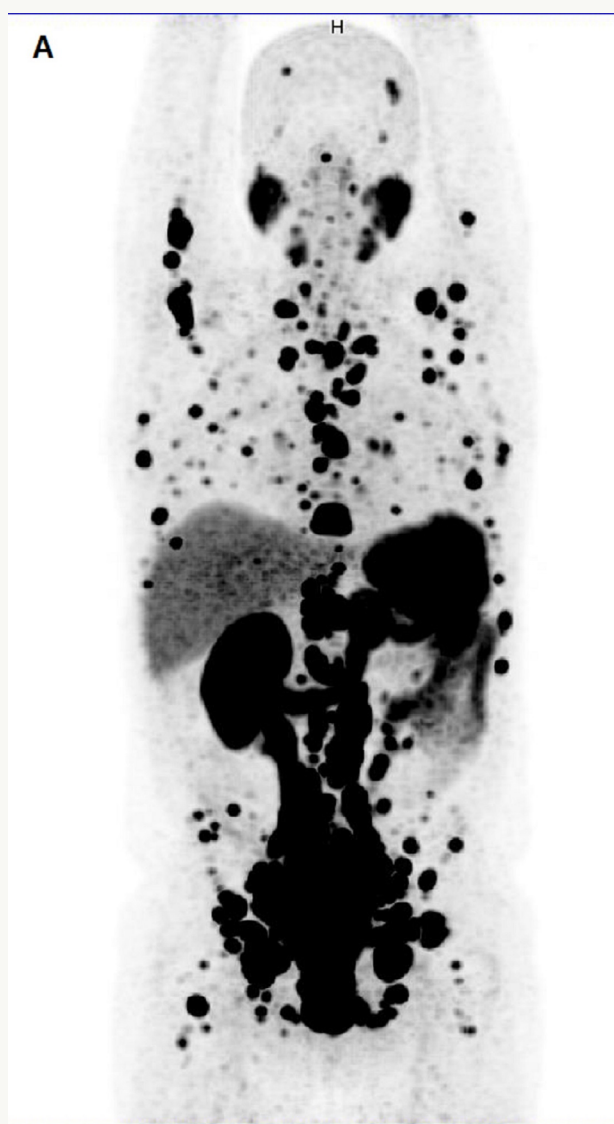


Figure 1A. Baseline PET/CT Scan with Ga68-PSMA, Maximum Intensity Projection (MIP) images.

Table 1. Treatments history from 2014 to 2015.

Date	Treatment	Period	Reason for discontinuation
January 2014	Carboplatin plus Docetaxel	4 months	Maximum clinical benefit
June 2014	Abiraterone	6 months	Disease progression
January 2015	Cisplatin plus Docetaxel	4 months	Maximum clinical benefit
August 2015	Enzalutamide	4 months	No benefit
December 2015	Cabazitaxel	10 months	Toxicity

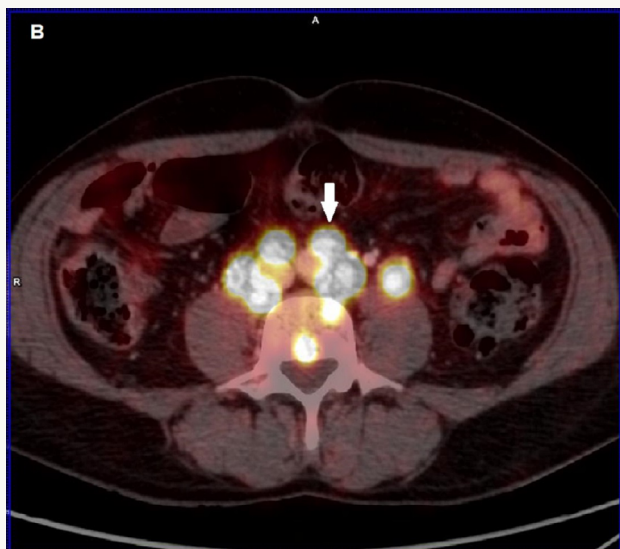


Figure 1B. Baseline PET/CT Scan with Ga68-PSMA, fused 68Ga-PSMA ligand PET/CT presenting with intensive 68Ga-PSMA ligand uptake by enlarged retroperitoneal lymph nodes (white arrow).

The patient was then monitored in Brazil with weekly clinical assessments and lab exams every two weeks, with special attention to renal function, electrolytes and blood cell count, as tumor lysis syndrome and myelotoxicity were our main concerns. In fact, the patient presented with tumor lysis syndrome and some myelotoxicity. Approximately 30 days after the application, on October 28th, 2016, we noticed tumor lysis, with the patient showing creatinine levels of 2.46 mg/dL (baseline 1.41 mg/dL) and hyperuricemia of 11.4 mg/dL (normal baseline). This side effect was managed according to the clinical protocol of our institution and no hospitalization was required. Myelotoxicity became a problem only after the second application, carried out on December 6th, 2016, with the administration of 6 MBq of intravenous ²²⁵Ac-PSMA. Hemoglobin, platelet and neutrophil levels reached nadir values of 7.9 g/dL, 118,000 platelets/mm³ and 915 neutrophils/mm³, respectively, approximately thirty days after the second cycle. The patient required transfusion support (10 mL/Kg of packed red blood cells) to treat fatigue related to

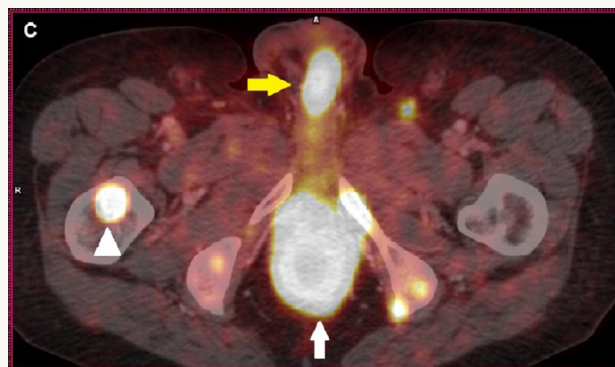


Figure 1C. Baseline PET/CT Scan with Ga68-PSMA, fused 68Ga-PSMA ligand PET/CT presenting with intensive 68Ga-PSMA ligand uptake by lesions in the urethra (yellow arrow), rectum (white arrow) and bone (triangle).

anemia and granulocyte-colony stimulating factor (Filgrastim 300 µg for 3 days) in order to reduce the risk of infections.

The third cycle was administered on January 26th, 2017 (dose: 6 MBq), after which we accessed objective response of the treatment with PET/CT-Ga68-PSMA (Figure 2).

These images were jointly assessed with the colleagues in Germany and we decided for a fourth application, which occurred in May 2017 (dose: 6 MBq) in view of some persistent lesions still highly avid by PSMA.

The treatment has been completed and the patient is clinically well, active, with no neoplasm symptoms, with ECOG zero performance status. PSA, after peaking at 354.4 ng/mL 2 weeks after the administration of the first treatment dose (expected due to tumor lysis), was progressively declining. Currently, it is at 0.33 ng/mL level (Figure 3). The patient also had significant metabolic and radiologic responses assessed by a PET CT Scan Ga68-PSMA (Figure 4), performed approximately 2 months after the last dose. The patient has grade 2 xerostomia and xerophthalmia and uses artificial saliva and tears in addition to generous oral hydration. He keeps receiving Goserelin 10.8 mg subcutaneously every 90 days.

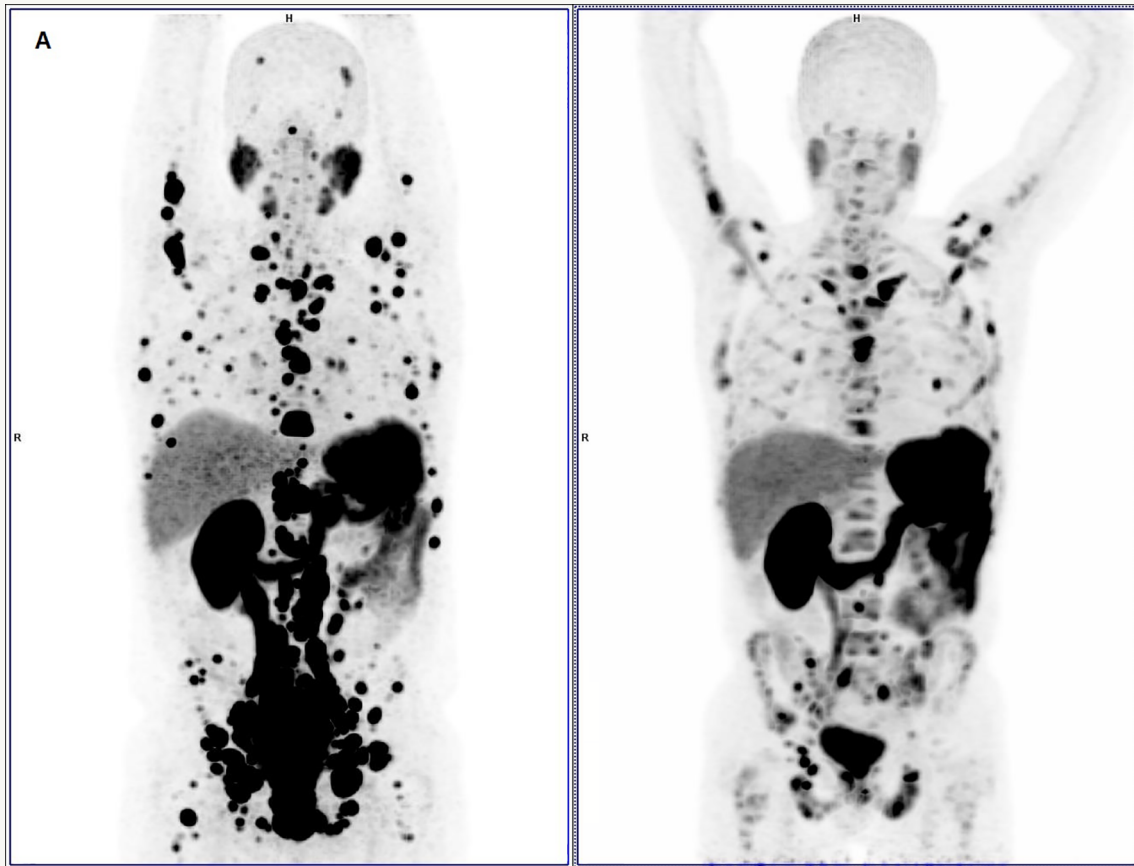


Figure 2A. Comparative PET/CT Scan with Ga68-PSMA, before and after 3 doses of treatment, Maximum Intensity Projection (MIP) images. To the right after 3 doses of Ac225-PSMA. The number of target lesions significantly reduced.

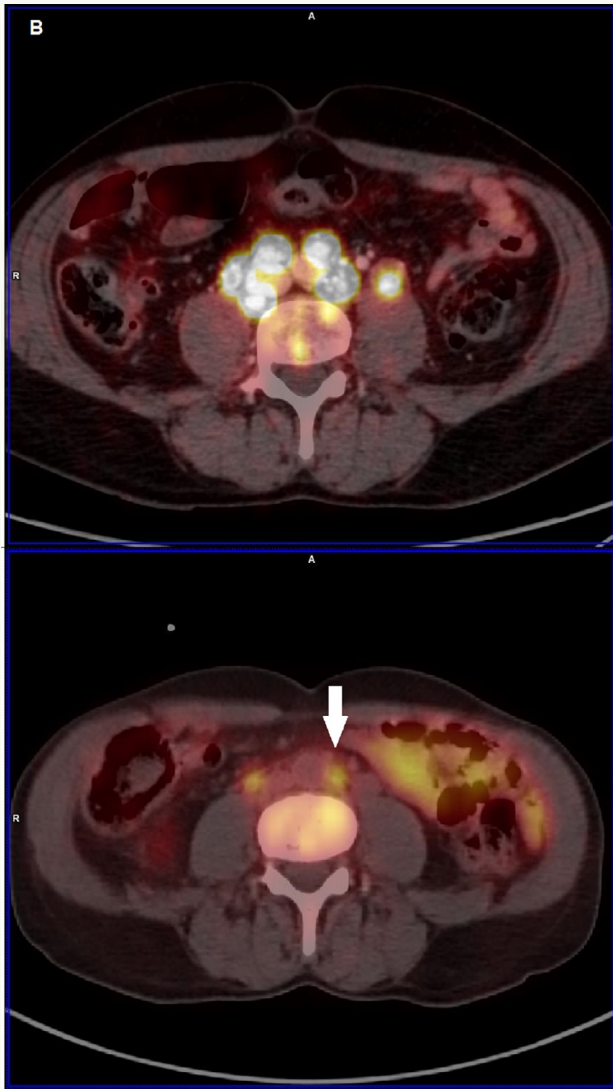


Figure 2B. Comparative PET/CT Scan with Ga68-PSMA, before and after 3 doses of treatment, fused 68Ga-PSMA ligand PET/CT. Lower images are after treatment. Retroperitoneal lesions significantly reduced (white arrow).

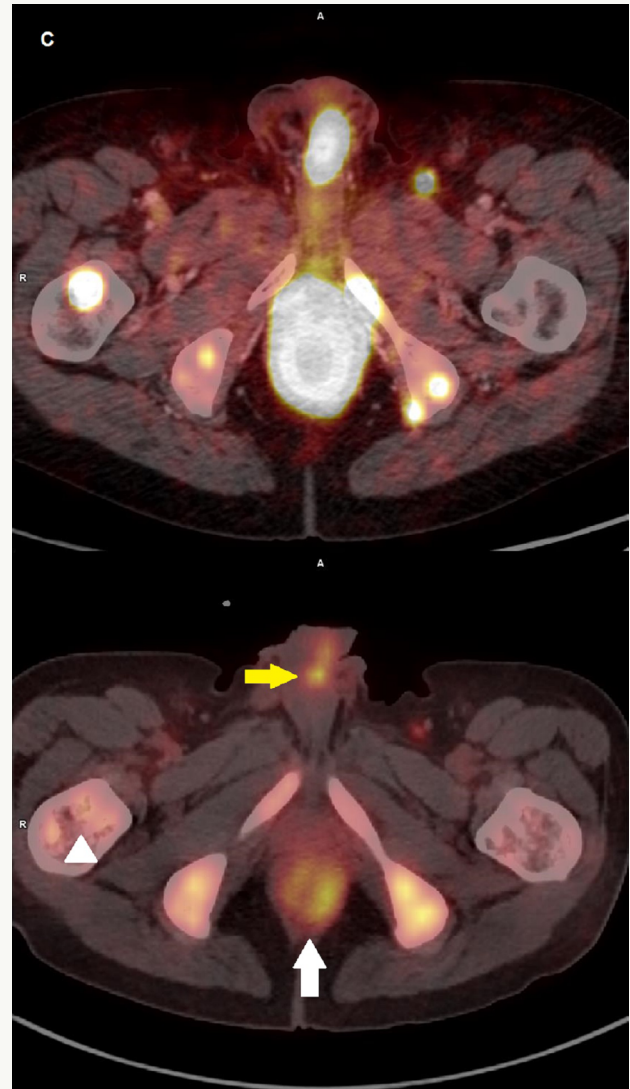


Figure 2C. Comparative PET/CT Scan with Ga68-PSMA, before and after 3 doses of treatment, fused 68Ga-PSMA ligand PET/CT. Lower image after treatment. Lesions in the urethra (yellow arrow), rectum (white arrow) and bone (triangle) significantly improved.

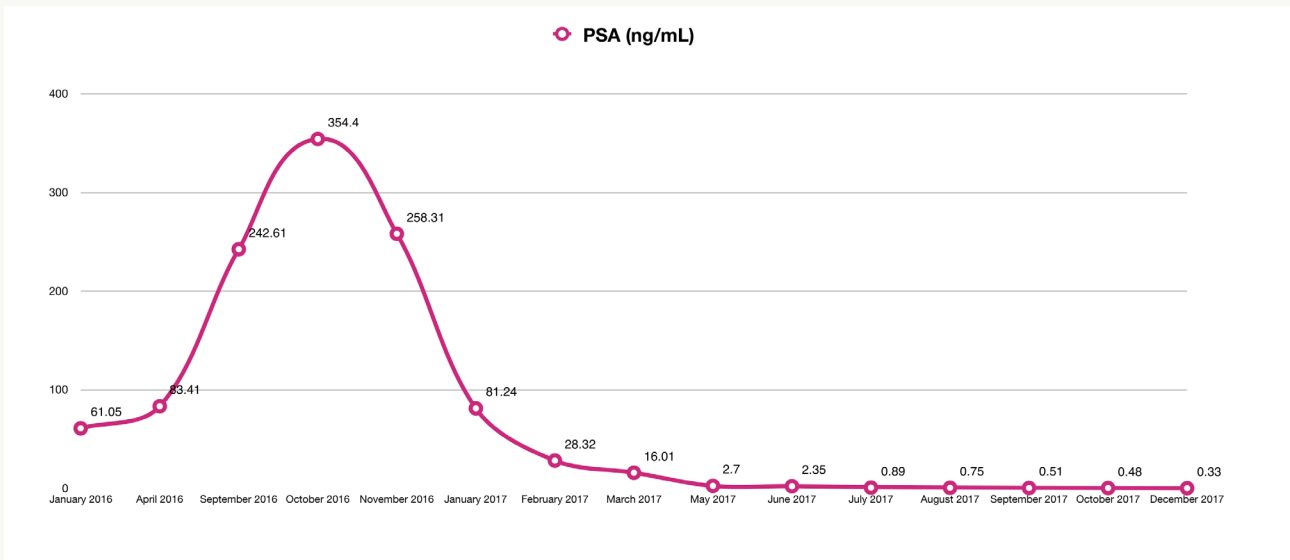


Figure 3. Serum prostate-specific antigen (PSA) values.

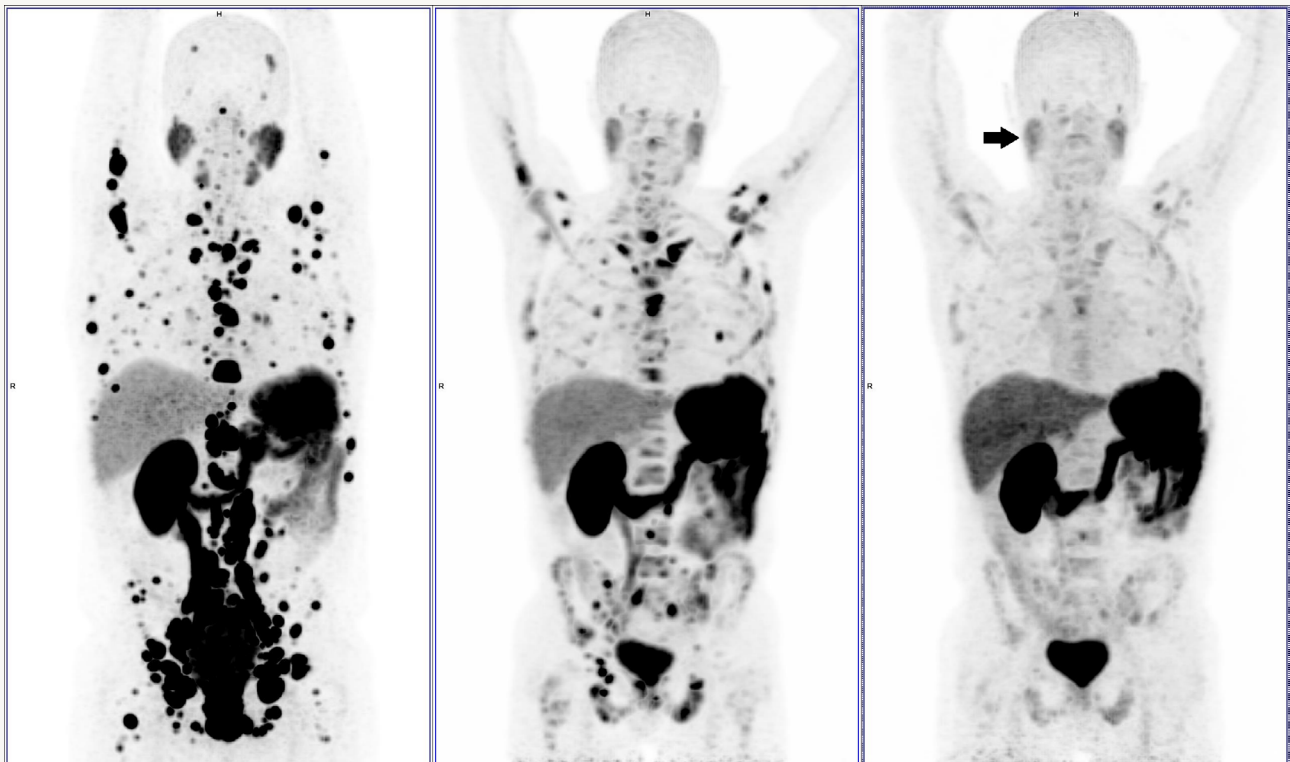


Figure 4. Comparative PET/CT Scan Ga68-PSMA, before (left), after 3 doses (center) and at the end of treatment (right). Maximum intensity projection (MIP) images presenting progressive response in virtually all target lesions and also diminishing Ga68-PSMA ligand uptake in parotid glands (arrow).

DISCUSSION

Patients with mCRPC currently have a considerable therapeutic arsenal at their disposal, significantly greater than the options available in the beginning of the 21st century. However, disease progression with clinical impairment and death are expected events. In this scenario, radioisotope targeted therapies appear as an interesting approach.

Lutetium-177 PSMA, a beta emitter, the first to be investigated, provided patients with a level of response that was unimaginable before, with up to 76% of objective response reported.⁽⁹⁾ However, the beta particle emitted by this radioisotope has energy of 498 keV and tissue penetration of approximately 1.5 mm, which poses a considerable risk of myelo-suppression when bone involvement is extensive. Additionally, its linear energy transfer (LET) is not high, and up to 30% of the patients experience failure during the treatment.⁽¹⁰⁾

Alternatively, alpha-emitting radioisotopes have features that post them as excellent therapeutic alternatives. High LET, low tissue penetration (up to 100 µm, only two to three cells in diameter) and proper half-life are some examples.

Alpha particles are heavier particulate emissions emanated from the nucleus of specific radioisotopes. Differently from beta particles, they go through a short linear distance when leaving the nucleus (only some cells in diameter) delivering a large amount of energy on their way. The effectiveness in destroying cells is attributed to its high LET even at concentrations much lower compared to those needed to reach the same effect with beta particles. High LET inside cell nucleus leads to irreparable DNA double helix damage, causing a variety of cell cycle events, such as cell cycle arrest, apoptosis and necrosis.⁽¹¹⁾

One to three alpha particles going through the nucleus are needed to cause irreparable DNA damage and cell death. This makes alpha emitters 100 to 500 times stronger than beta emitters with low LET. Alpha particles do not depend on the generation of ox-

igen free radicals to cause cell injury. Therefore, tissue hypoxia is not a necessary condition, differently from beta particles.⁽¹²⁾ *In vitro* comparisons between alpha and beta emitters (213-Bi and 177-Lu) coupled to somatostatin analogs (DOTATOC) have shown that alpha emitters are 4 times more capable to induce cell apoptosis.⁽¹¹⁾ Additionally, alpha-emitting therapy can overcome radioresistance in patients with refractory neuroendocrine tumors to treatment with Lutetium-177 somatostatin analogs.⁽¹³⁾

A major challenge related to alpha particles is the difficulty of production. We wish, as soon as possible, this obstacle is surpassed, allowing the studies using this highly promising technology achieve scale.

The ²²⁵Ac-PSMA in the treatment of patients with mCRPC is a reality, although still restricted to few centers in Europe due to the reasons mentioned before.

The initial results are extremely encouraging, and phase 2 trials are ongoing with great preliminary data. Some reports indicate 95% objective response rates and up to 20% complete tumor response in imaging assessments, which is absolutely impressive and unprecedented.⁽¹⁰⁾

Our patient has been free of conventional cytotoxic drugs for two years now. His quality of life has improved substantially, and he has maintained response for 22 months since beginning the treatment for his contentment and our fulfillment.

We do not know what to expect in the long-term. We still have many questions to be answered. When will the disease progress? What kind of neoplasm will come next? Will it be more aggressive? Will it be sensitive or resistant to hormonal strategies? We are also not familiar with potential undesirable effects in addition to xerostomia and xerophthalmia.

However, until we have the answers, we are comfortable to discuss this option with patients that have not responded to approved conventional therapies and whose clinical condition allow them to be potentially eligible to the strategy.

AUTHOR'S CONTRIBUTION

Rodrigo Bovolin de Medeiros: Collection and assembly of data, Conception and design, Data analysis and interpretation, Final approval of manuscript, Manuscript writing, Provision of study materials or patient.

Marcus Vinicius Grigolon: Collection and assembly of data, Conception and design, Data analysis and interpretation, Manuscript writing, Provision of study materials or patient.

Tatianny Paula Araújo: Collection and assembly of data.

Miguel Srougi: Final approval of manuscript, Provision of study materials or patient.

REFERENCES

1. Global Burden of Disease Cancer Collaboration, Fitzmaurice C, Allen C, Barber RM, Barregard L, Bhutta ZA, Brenner H, et al. Global, Regional, and National Cancer Incidence, Mortality, Years of Life Lost, Years Lived With Disability, and Disability-Adjusted Life-years for 32 Cancer Groups, 1990 to 2015: A Systematic Analysis for the Global Burden of Disease Study. *JAMA Oncol.* 2017;3(4):524-48.
2. Brazil. Ministério da Saúde. Instituto Nacional de Câncer José Alencar Gomes da Silva. Estimativa 2018: Incidência de Câncer no Brasil. Rio de Janeiro: Instituto Nacional de Câncer José Alencar Gomes da Silva; 2018 [cited 2019 Jan 18]. Available from: <https://www.inca.gov.br/sites/ufu.sti.inca.local/files//media/document//estimativa-incidencia-de-cancer-no-brasil-2018.pdf>
3. Maurer T, Gschwend JE, Rauscher I, Souvatzoglou M, Haller B, Weirich G, et al. Diagnostic Efficacy of (68)Gallium-PSMA Positron Emission Tomography Compared to Conventional Imaging for Lymph Node Staging of 130 Consecutive Patients with Intermediate to High Risk Prostate Cancer. *J Urol.* 2016;195(5):1436-43.
4. Parker C, Nilsson S, Heinrich D, Helle SI, O'Sullivan JM, Fosså SD, et al.; ALSYMPCA Investigators. Alpha emitter radium-223 and survival in metastatic prostate cancer. *New Eng J Med.* 2013;369(3):213-23.
5. Yadav MP, Ballal S, Tripathi M, Damle NA, Sahoo RK, Seth A, et al. 177Lu-DKFZ-PSMA-617 therapy in metastatic castration resistant prostate cancer: safety, efficacy, and quality of life assessment. *Eur J Nucl Med Mol Imaging.* 2017;44(1):81-91.
6. Buyyounouski MK, Choyke PL, McKenney JK, Sartor O, Sandler HM, Amin MB, et al. Prostate cancer – major changes in the American Joint Committee on Cancer eighth edition cancer staging manual. *CA Cancer J Clin.* 2017;67(3):245-53.
7. Oken MM, Creech RH, Tormey DC, Horton J, Davis TE, McFadden ET, et al. Toxicity and response criteria of the Eastern Cooperative Oncology Group. *Am J Clin Oncol.* 1982;5(6):649-55.
8. Kratochwil C, Giesel FL, Eder M, Afshar-Oromieh A, Benešová M, Mier W, et al. [177Lu]Lu-tetium-labelled PSMA ligand-induced remission in a patient with metastatic prostate cancer. *Eur J Nucl Med Mol Imaging.* 2015;42(6):987-8.
9. Kulkarni HR, Singh A, Schuchardt C, Niepsch K, Sayeg M, Leshch Y, et al. PSMA-Based Radioligand Therapy for Metastatic Castration-Resistant Prostate Cancer: The Bad Berka Experience Since 2013. *J Nucl Med.* 2016;57(Suppl 3):97S-104S.
10. Kratochwil C, Bruchertseifer F, Giesel FL, Weis M, Verburg FA, Mottaghy F, et al. 225Ac-PSMA-617 for PSMA-Targeted α -Radiation Therapy of Metastatic Castration-Resistant Prostate Cancer. *J Nucl Med.* 2016;57(12):1941-4.
11. Wadas TJ, Pandya DN, Solingapuram Sai KK, Mintz A. Molecular targeted α -particle therapy for oncologic applications. *AJR Am J Roentgenol.* 2014;203(2):253-60.
12. Nayak T, Norenberg J, Anderson T, Atcher R. A comparison of high- versus low-linear energy transfer somatostatin receptor targeted radionuclide therapy in vitro. *Cancer Biother Radiopharm.* 2005;20(1):52-7.
13. Kratochwil C, Giesel FL, Bruchertseifer F, Mier W, Apostolidis C, Boll R, et al. 213Bi-DOTATOC receptor-targeted alpha-radionuclide therapy induces remission in neuroendocrine tumours refractory to beta radiation: a first-in-human experience. *Eur J Nucl Med Mol Imaging.* 2014;41(11):2106-19.